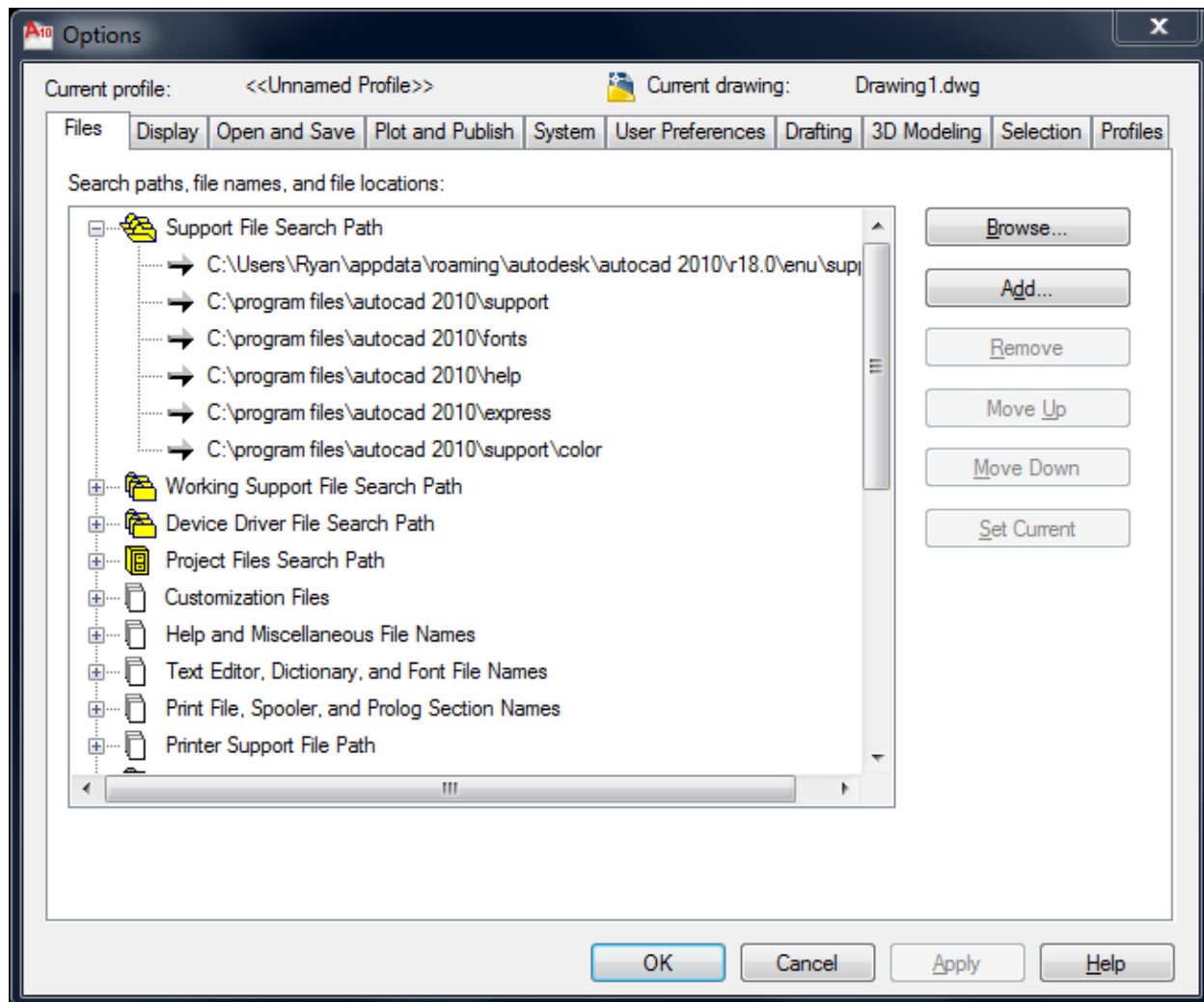


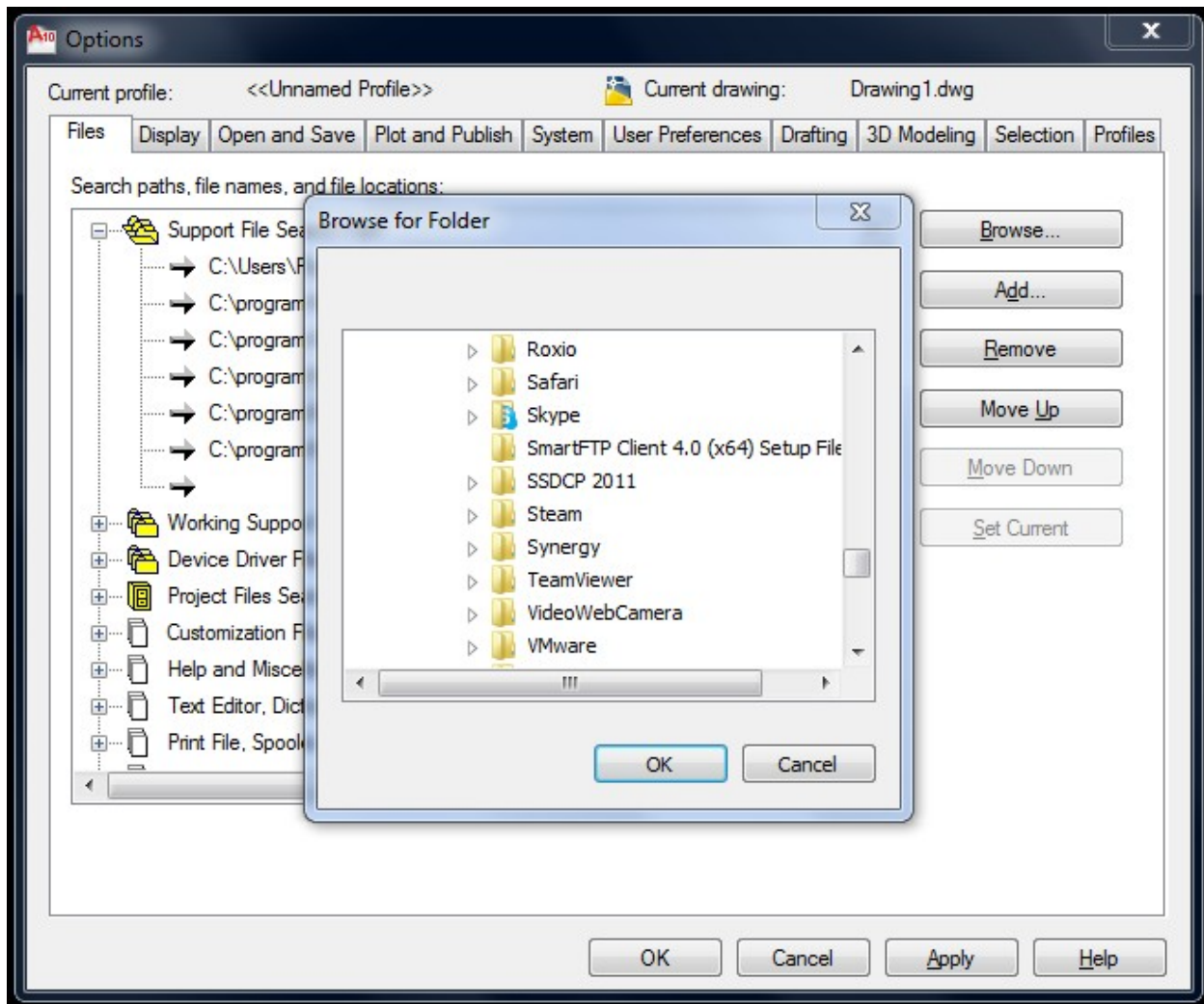


64-bit AutoCAD Settings

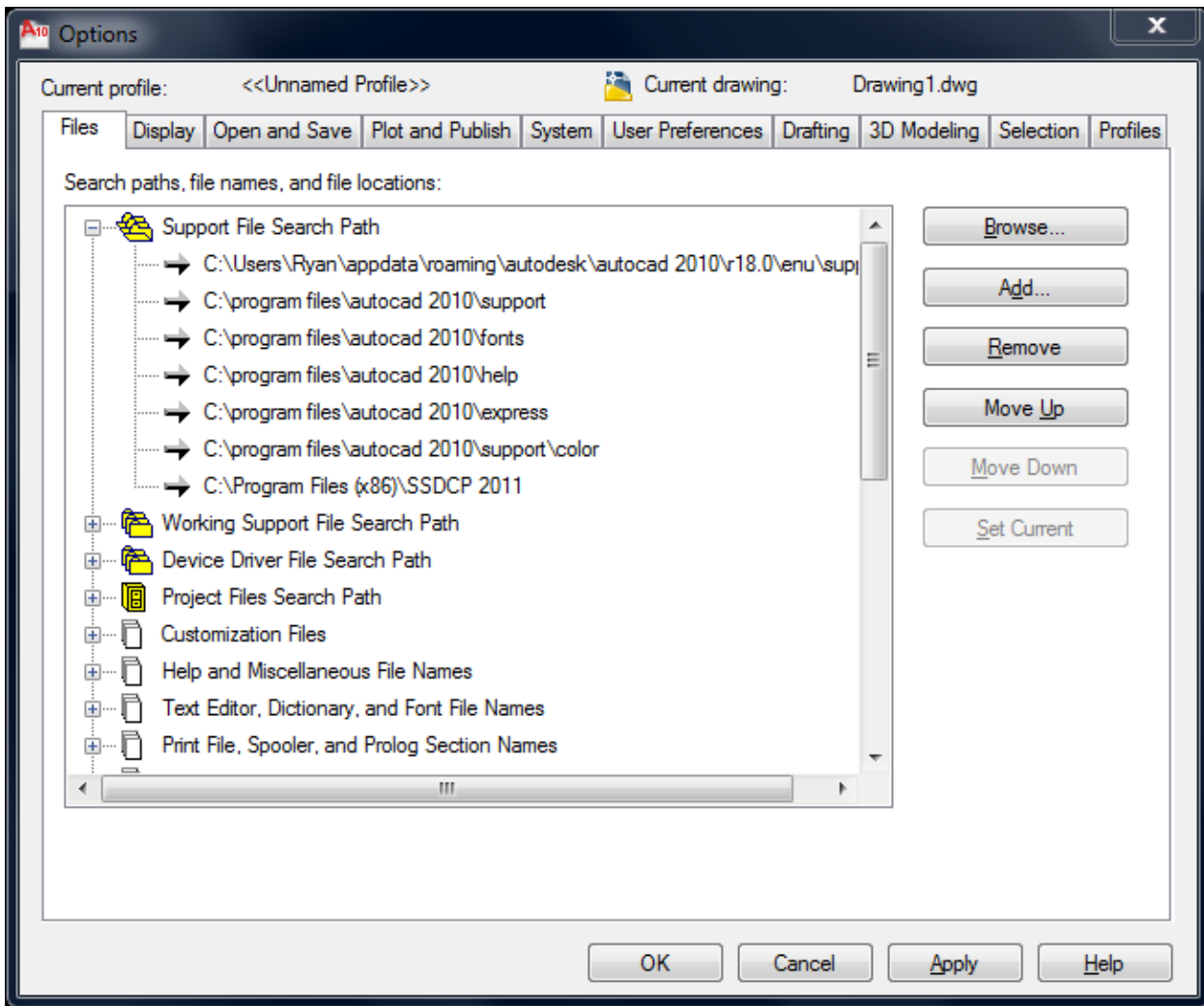
After setting the Windows permissions, we need to add a support file path to AutoCAD. Launch AutoCAD and type `OPTIONS` on the command line and press enter. This will launch a window similar to the one below.



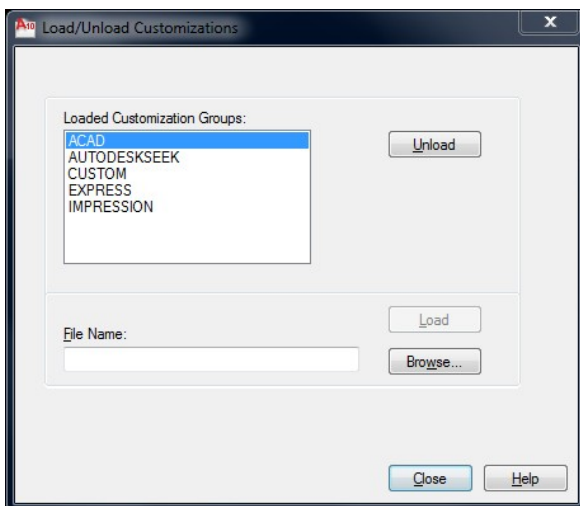
Select the "Support File Search Path" folder and then click the Add button, and then the Browse button. Navigate to the SSDCP program folder that you modified in earlier steps. Select the folder and click OK.



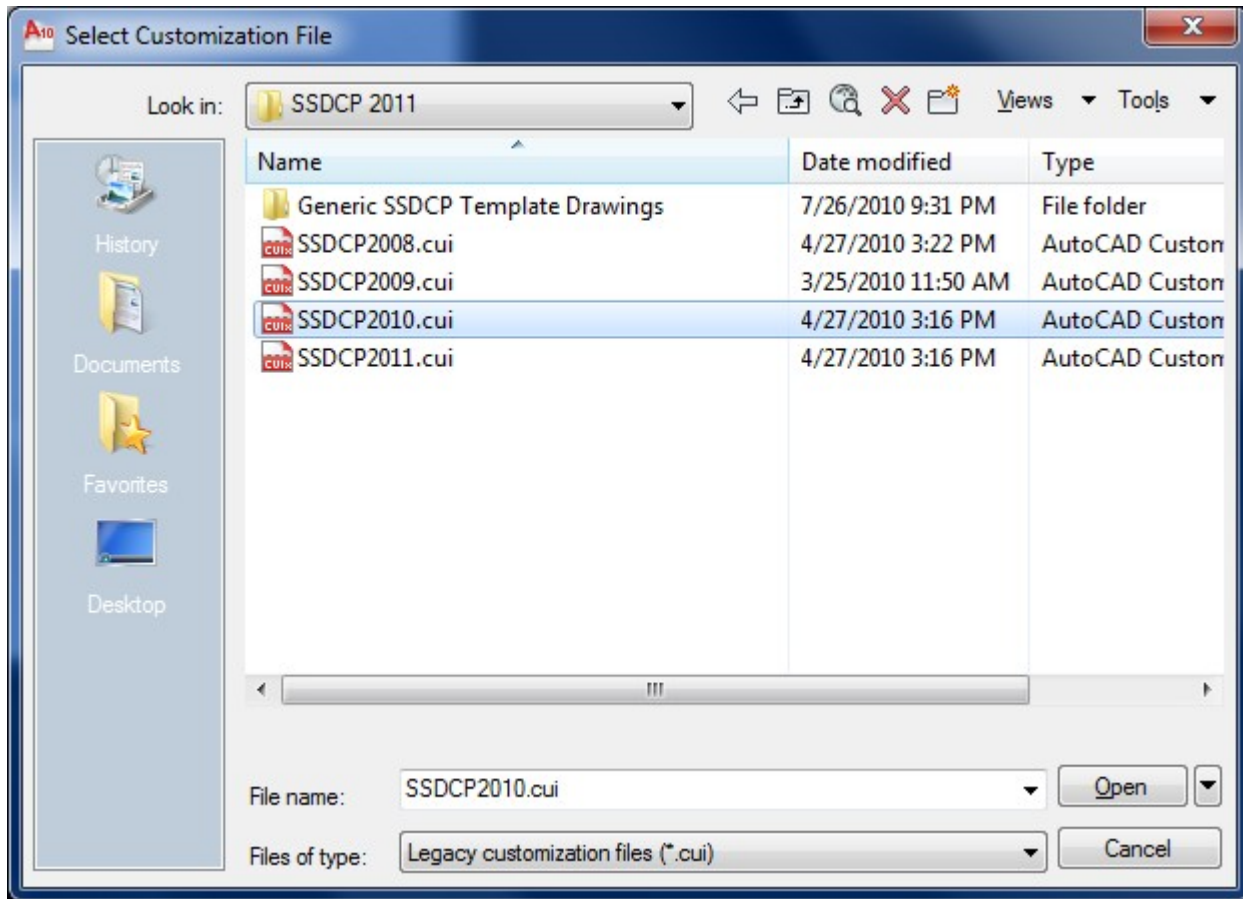
Verify that you see the new path in the list and then click Apply.



Next, type CUILOAD on the command line in AutoCAD. Click Browse on the window that pops up.



At the bottom of the screen, click the drop down box "Files of Type" and select "Legacy customization files". Navigate to the SSDCP program folder from the previous step and select the CUI file for your version of AutoCAD. Click Open and then on the previous screen click Load.



Once you close the CUILOAD window, you should now see an SSDCP menu item in AutoCAD. If you do not see them menu, try changing your default CAD workspace to AutoCAD Classic. You can make the change by clicking on the gear icon in the bottom right corner of AutoCAD and selecting AutoCAD Classic.