



Now available for registered users!

2011 is the most recent upgrade for your SSDCP detailing programs. You'll find powerful new programs and some great new features all designed to make this the best and fastest version of SSDCP ever. And, we kept the same look and feel in all the programs that have made SSDCP so popular. Best of all, we kept the price \$100 below the last update!

SSDCP 2011 Update > \$495  
Additional Licenses > \$95  
-----

The content of this update is split between keeping SSDCP current with new versions of Windows or AutoCAD, and adding new features, programs, and enhancements.

UPDATE OUTLINE:

- Windows 7 Support
- 64-bit support
- AutoCAD 2011 Support
- Expanded SSDCP Options
- New SSDCP Setup
- Updated Steel Shapes, Added Aluminum Shapes
- New Stair/Handrail functions
- New Bracing functions
- New Text Conversion program
- Added AutoBOM functionality
- Add'l Beam/Column AutoBOM features
- Misc Programs AutoBOM functions
- Various program fixes

## Window 7 support:

SSDCP runs super fast in the newer operating systems – including Windows 7. If you haven't tried Win7 yet, you really should .. it's awesome! SSDCP programs still work with Vista, XP, and Win 2000 too. (note - Win 98 support was discontinued with the 2005 update).

## 64-bit support

SSDCP can now operate on 64-bit computers, operating systems, and AutoCAD.

## AutoCAD 2011 support:

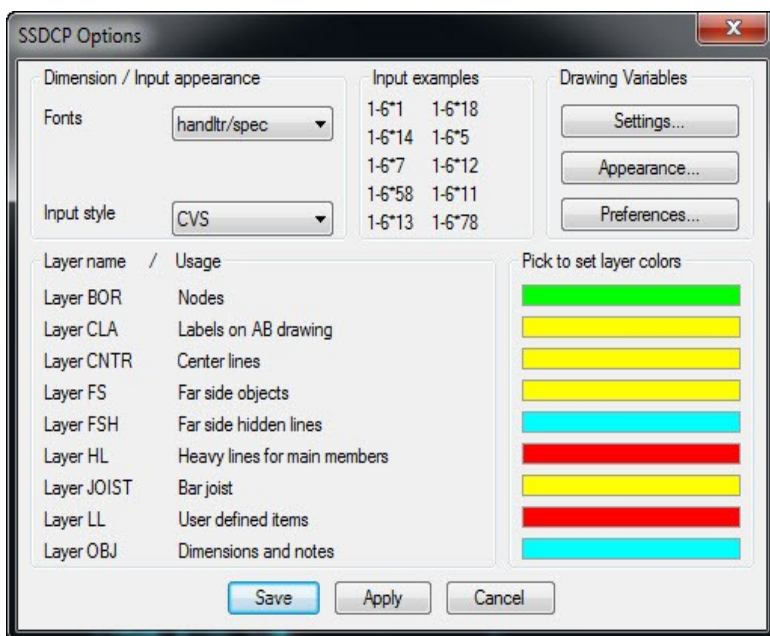
2011, 2010, 2009, 2008 support has been added. This includes Full AutoCAD & LT versions. That means SSDCP will run on anything from R14 to 2011.

## Expanded SSDCP Options:

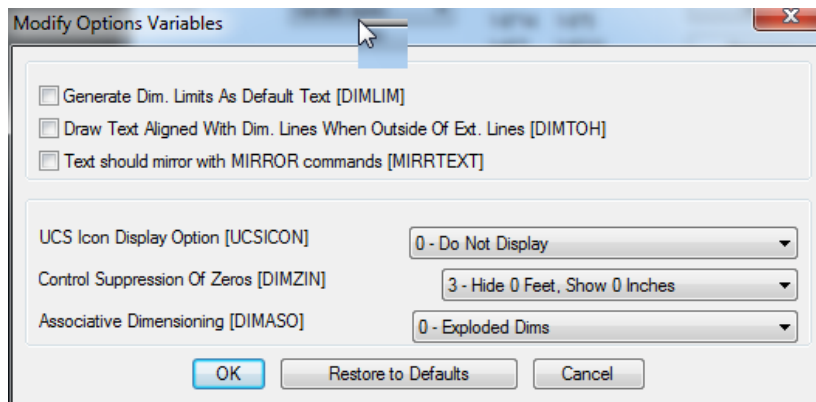
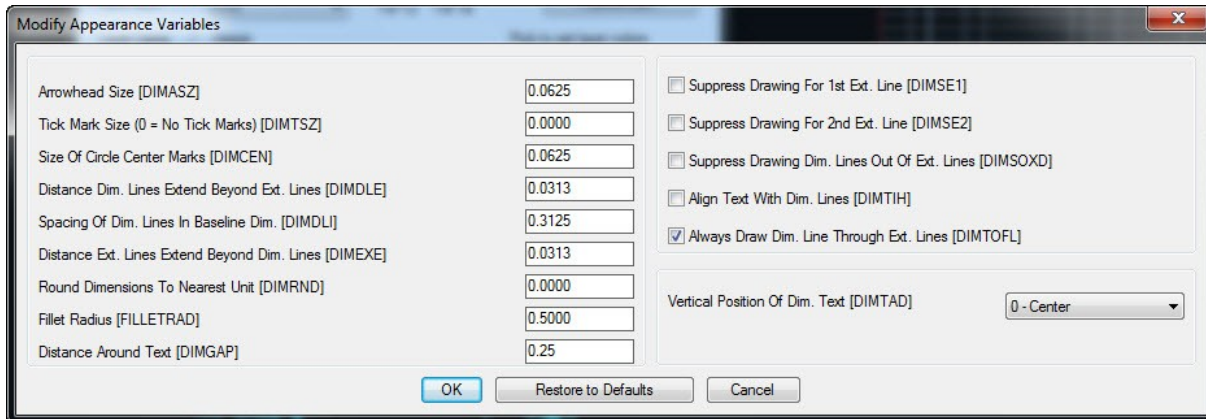
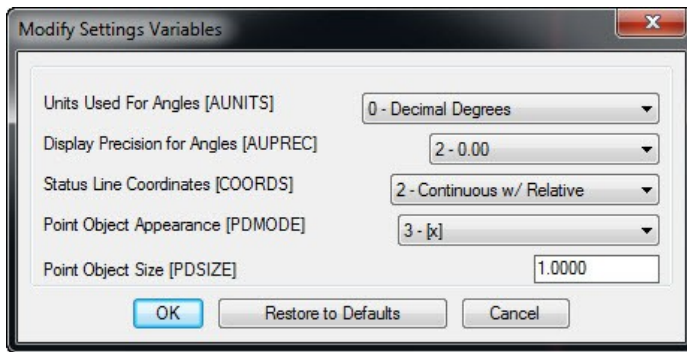
2011 introduces a reworked OPTIONS program. You now have the ability to control several more aspects of drawings presentation. Among them are:

- Choose arrowheads / tickmarks and their size
- Use associative dimensioning
- Set object point size and appearance
- Fillet Radius size
- Spacing of dimension lines
- Dimension text alignment
- In all, there are 26 new settings for fine-tuning SSDCP drawings

There are 3 new screens within the OPTIONS program (see buttons in upper right).



*Options Main screen*

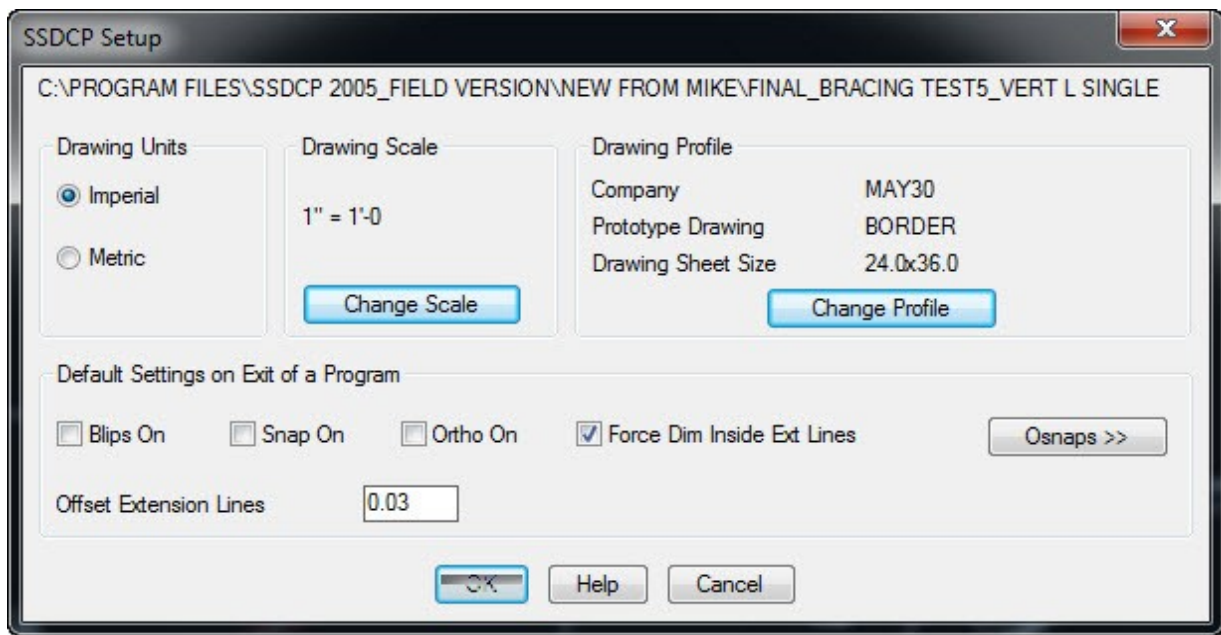


The 3 new screens contain fields for more in-depth control of drawing presentation and dimension variable settings.

SSDCP is preset to use the same variables as in older versions - using the new settings is optional. Your drawings will look the same as always unless you choose to change them. Should you ever need to return to SSDCP's stock settings, there is a new "return to defaults" button which resets the original defaults.

## **New SSDCP Setup:**

The Setup program was reworked to be easier to use and more predictable. It is now possible to change just some of the values on the screen without invoking the complete process. In past versions, changing something simple like OSNAP settings would cause SSDCP to do a complete new setup, often changing things you didn't intend to change.



Also new is the ability to browse to select a prototype drawing as opposed to keying in the full path + file name and extension.

## Updated Steel Shapes, Added Aluminum Shapes:

AISC changes plus aluminum shapes added.

- ✓ Aluminum shapes – the complete ASU and AI catalogs of ALUMINUM SHAPES were added to SSDCP. They are selected from any shape selection dialogue boxes throughout SSDCP.
- ✓ Updated shapes dimensions/New shapes – New AISC Steel Shapes were added to the database and some dimensions of a few other shapes that were changed over the past few years were updated to reflect current AISC dimensions.

## New Stairs / Handrail Functions:

The SSDCP stair and handrail programs are our best yet.

- ✓ Automatic Handrail-to-Stair Detailing – SSDCP 2011 now allows you to save basic stair data (elevations, rise and run dimensions, etc.) to a file the handrail programs can use to detail matching handrails. This is optional – rail data can still be entered manually.
- ✓ Assembly Material BOM Listing – The stair programs now calculate sizes for ALL materials, including assembly materials like closure plates, tread supports, etc. and list them on the drawing for auto-BOM listing. Older versions listed only bigger materials like stringer channels, clips, etc..

- ✓ Stair Pan sizing – SSDCP now calculates the overall dimensions for stair pans and adds a material label to the drawing to 'pick' for auto-BOM listing.
- ✓ Stair Options – Added a default for the size of the tread support material. You can now control the setback of tread support angle on welded grating treads.

## **New Bracing Functions:**

SSDCP's bracing programs, possibly our most automated, are even better for 2011. The new programs make detailing even the most complicated bracing super fast.

Older versions detailed bracing quickly, but they did little in the way of sizing materials or listing them on the drawing or the BOM – basically, that was all done manually.

For 2011, all 23 bracing programs were re-worked to be compatible with the Auto-BOM system. Past versions of SSDCP did not allow you to input connection material sizes or set edge distances, which made it impossible for SSDCP to size gusset plates/materials .. or to list them in the BOM. The main material was not written in the correct format for Auto-BOM listing.

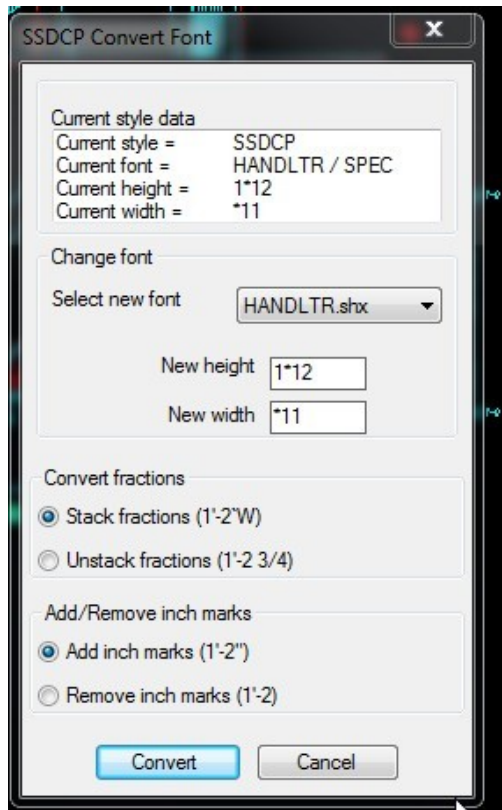
SSDCP 2011 now does ALL of this! The programs now calculate, draw, dimension, and list material. Brace detailing is automated from top to bottom.

- ✓ New default screen fields ('general' questions) were added for setting edge distances, connection angle sizes, and connection plates sizes.
- ✓ Every bracing program now allows the main material to be 'picked' onto for quick Auto-BOM listing.
- ✓ Gusset plates are now automatically sized, and a material label added onto the drawing for Auto-BOM picking. Labels and leaders can be user-placed and text will flip to right or left depending on your placement.
- ✓ Connection angles on gusset plates are now sized and labeled on the drawing. The labels can be picked for Auto-BOM listing.

## New Text Conversion Program:

There is a new program under the Utilities menu for converting SSDCP text and dimensions to any standard AutoCAD font.

This is useful when, for example, a customer requires that you only use standard fonts. There are functions for adding/removing inch marks and for stacking/unstacking fractions. You can control/edit text height and width.



## Added Auto-BOM functionality:

Additional Auto-BOM functions were added throughout SSDCP. Individual programs that didn't support the Auto-BOM system were modified to gather and calculate material descriptions and place labels onto the drawings.

The 'manual' portion of the BOM program allows more types of material to be entered.

## Additional Beam/Column Material Listing:

The Beam (flat and sloping) and Column programs lacked a few pieces of material to be listed .. those were added. Now all materials, both main and assembly, are calculated and listed.

## **Miscellaneous Programs Auto-BOM Functions:**

In older versions of SSDCP, the miscellaneous programs such as Roof Frames, Pour Stops, Lintel Plates, etc. did not list the materials on the drawing or the BOM. That functionality was added in 2011.

Material labels are user placed, and depending on which direction you stretch the leaders, the text will be placed accordingly.

## **Various Program Fixes:**

Over the past few years, bug fixes and small enhancements were made throughout SSDCP. These were issued to users via website patches. A few that were made recently were not since a major upgrade was so close.

All of these have been incorporated into this upgrade. This update has been sent to roughly 50 users within the past few months, and therefore any bugs or problems have been reported and fixed.

Many thanks to those users who helped us through this process! We are very proud of this work and feel like it makes SSDCP more powerful and in many cases, easier to use. We welcome your feedback. This is how we determine what we add to the program and which new ones we write.

Enjoy!