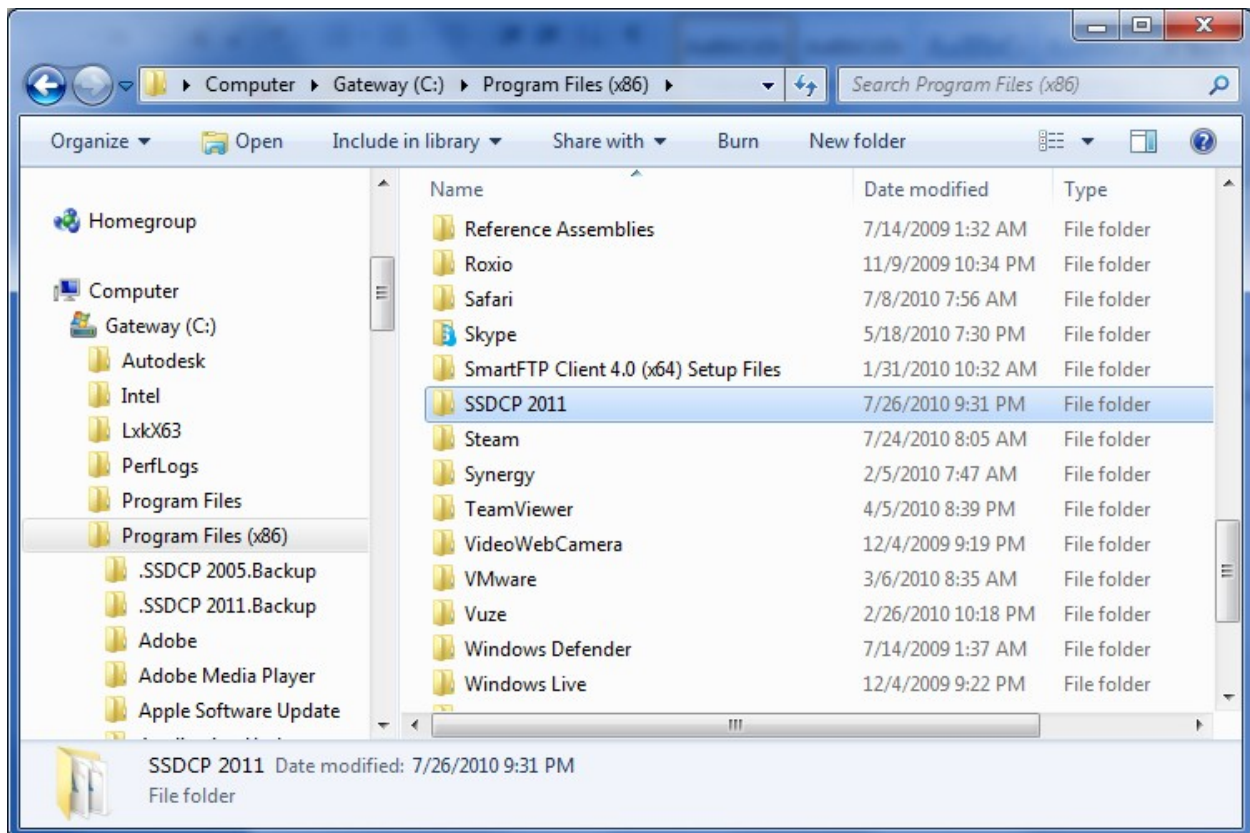




## Permissions Settings - Windows Vista & Windows 7

On all versions of Windows, SSDCP needs permission to read and write files located within the Program Files folder. This means the computers it runs on must be set to have administrator-level permissions. SSDCP will not run correctly otherwise. There are extra considerations when installing SSDCP in Vista and Windows 7.

After the SSDCP 2011 installation completes, navigate to the Program Files folder on your hard drive. If you are running a 64-bit version of Vista or Win 7, the folder that SSDCP installs into will be the "C:\Program Files (x86)" folder.



Right click on the SSDCP 2011 folder and select Properties from the bottom of the pop-up menu. This will launch a window with several tabs, select the Security tab and you will see a screen similar to below.

The permissions for the Users group will need to be adjusted, to do this first click the "Edit..." button. This will open the Permission window shown to the right below. Select the Users group as shown and click in checkbox next to Full Control under the Allow column. Lastly, click Apply on the Permission window, and Apply on the Properties window.

